



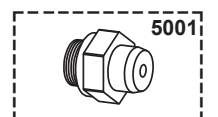
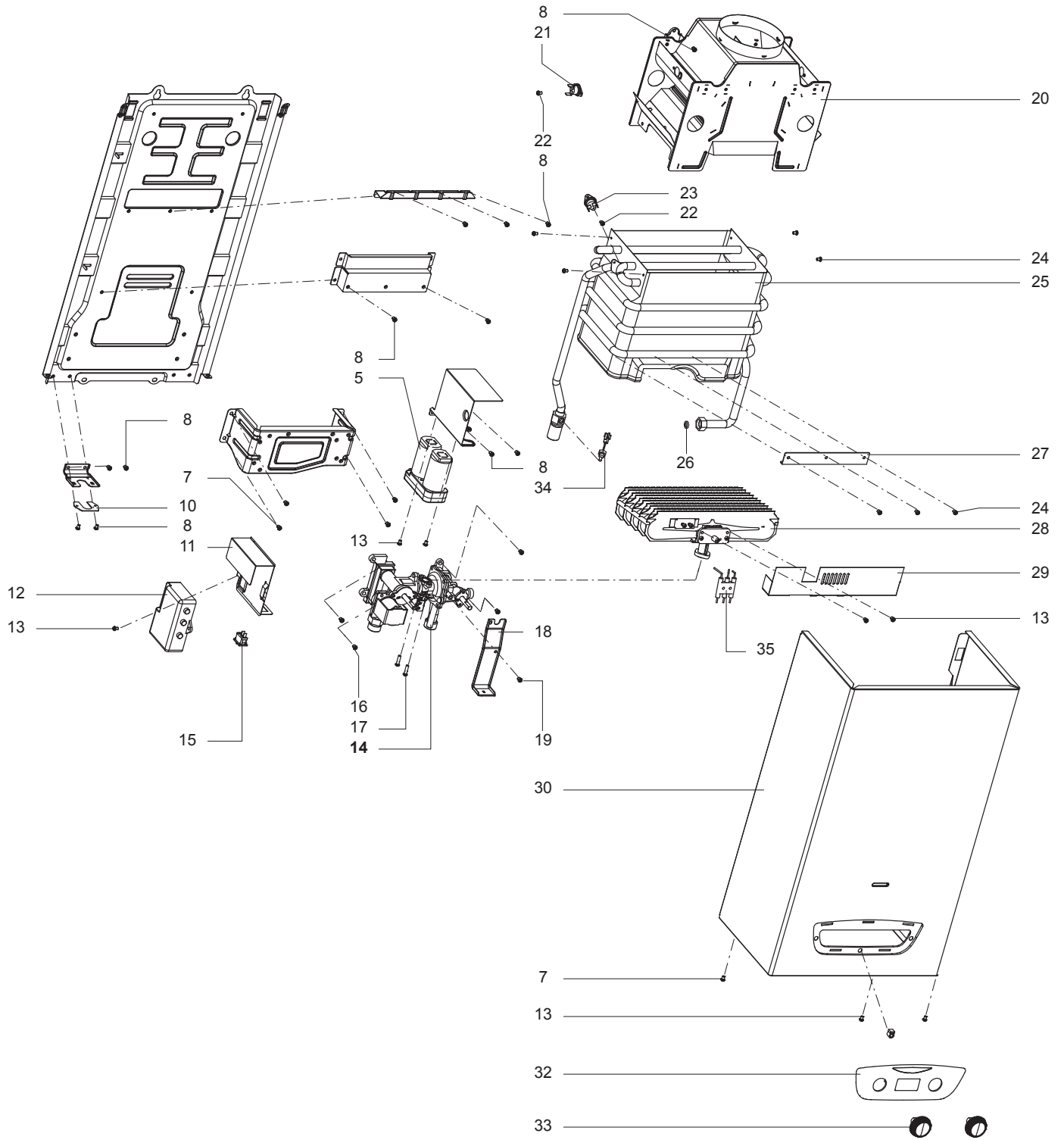
SPARE PARTS EXPLODED VIEW
INSTANTANEOUS GAS WATER HEATERS
Model
FAST R DISPLAY 10L NG

R8218646-01 - 29/01/2021

FAST R DISPLAY 10L

Instantaneous Gas Water Heaters

1	3632715	FAST R DISPLAY 10L NG	02-2021	-
Col	Reference	Model type	Begin	End



Instantaneous Gas Water Heaters

LIST OF THE ABBREVIATIONS

HW	: Hot water.
CW	: Cold water.
C	: Ceramic resistance (normal heating).
Ca	: Ceramic resistance (accelerated heating)
TP	: Immersion heater.
1F	: With fittings.
2F	: Without fittings.
3F	: With fittings and another outlet connection.
AMI	: With mixing valve.
SMI	: Without mixing valve.
PUISS	: Power of th appliance.
PN	: Appliance with normal pression.
LP	: Appliance with low pression.
PV	: Appliance with variable power.
PF	: Appliance with fixed power.

IDENTIFICATION PLATE

SERIAL NUMBER

5 Characters :

FD 8 61 (from 01/98 to 12/99)

Month of manufacture : from 61 to 72 → January to December
Year of manufacture : 8 → 1998
9 → 1999

OR

5 Characters :

FD 0 81 (from 01/00)

Month of manufacture : from 81 to 92 → January to December
Year of manufacture : 0 → 2000
1 → 2001
2 → 2002
etc ...

6 Characters :

FD 83 05

Month of manufacture
Year of manufacture : 83 → 2003
84 → 2004